

# 2012 CALENDAR & CONVERSION FACTORS

## JANUARY

Su	Mo	Tu	We	Th	Fr	Sa
1	2	3	4	5	6	7
8	9	10	11	12	13	14
15	16	17	18	19	20	21
22	23	24	25	26	27	28
29	30	31				

## FEBRUARY

Su	Mo	Tu	We	Th	Fr	Sa
			1	2	3	4
5	6	7	8	9	10	11
12	13	14	15	16	17	18
19	20	21	22	23	24	25
26	27	28	29			

## MARCH

Su	Mo	Tu	We	Th	Fr	Sa
				1	2	3
4	5	6	7	8	9	10
11	12	13	14	15	16	17
18	19	20	21	22	23	24
25	26	27	28	29	30	31

## APRIL

Su	Mo	Tu	We	Th	Fr	Sa
1	2	3	4	5	6	7
8	9	10	11	12	13	14
15	16	17	18	19	20	21
22	23	24	25	26	27	28
29	30					

## MAY

Su	Mo	Tu	We	Th	Fr	Sa
	1	2	3	4	5	
6	7	8	9	10	11	12
13	14	15	16	17	18	19
20	21	22	23	24	25	26
27	28	29	30	31		

## JUNE

Su	Mo	Tu	We	Th	Fr	Sa
					1	2
3	4	5	6	7	8	9
10	11	12	13	14	15	16
17	18	19	20	21	22	23
24	25	26	27	28	29	30

## JULY

Su	Mo	Tu	We	Th	Fr	Sa
1	2	3	4	5	6	7
8	9	10	11	12	13	14
15	16	17	18	19	20	21
22	23	24	25	26	27	28
29	30	31				

## AUGUST

Su	Mo	Tu	We	Th	Fr	Sa
			1	2	3	4
5	6	7	8	9	10	11
12	13	14	15	16	17	18
19	20	21	22	23	24	25
26	27	28	29	30	31	

## SEPTEMBER

Su	Mo	Tu	We	Th	Fr	Sa
						1
2	3	4	5	6	7	8
9	10	11	12	13	14	15
16	17	18	19	20	21	22
23	24	25	26	27	28	29
30						

## OCTOBER

Su	Mo	Tu	We	Th	Fr	Sa
	1	2	3	4	5	6
7	8	9	10	11	12	13
14	15	16	17	18	19	20
21	22	23	24	25	26	27
28	29	30	31			

## NOVEMBER

Su	Mo	Tu	We	Th	Fr	Sa
				1	2	3
4	5	6	7	8	9	10
11	12	13	14	15	16	17
18	19	20	21	22	23	24
25	26	27	28	29	30	

## DECEMBER

Su	Mo	Tu	We	Th	Fr	Sa
						1
2	3	4	5	6	7	8
9	10	11	12	13	14	15
16	17	18	19	20	21	22
23	24	25	26	27	28	29
30	31					

**Sunday, January 1**

*New Year's Day*

**3<sup>rd</sup> Monday in January**

*Martin Luther King, Jr. Day*

**3<sup>rd</sup> Monday in February**

*Washington's Birthday*

**Friday, April 6**

*Good Friday*

**Sunday, April 8**

*Easter*

**2<sup>nd</sup> Sunday in May**

*Mother's Day*

**Last Monday in May**

*Memorial Day*

**3<sup>rd</sup> Sunday in June**

*Father's Day*

**July 4**

*Independence Day*

**1<sup>st</sup> Monday in September**

*Labor Day*

**2<sup>nd</sup> Monday in October**

**November 11**

**4<sup>th</sup> Thursday in November**

**December 7**

**December 25**

*Columbus Day*

*Veterans Day*

*Thanksgiving Day*

*Pearl Harbor Day*

*Christmas*

### Length Conversions

	cm	m	in	ft
<b>1 Centimeter (cm) =</b>	1	1 x 10 <sup>-2</sup>	0.3937	3.28 x 10 <sup>-2</sup>
<b>1 Meter (m) =</b>	1 x 10 <sup>2</sup>	1	39.37	3.281
<b>1 Inch (in) =</b>	2.54	2.54 x 10 <sup>-2</sup>	1	8.33 x 10 <sup>-2</sup>
<b>1 Foot (ft) =</b>	30.48	0.3048	12	1
<b>1 Mile (mi) =</b>	1.60934 x 10 <sup>5</sup>	1.609 x 10 <sup>3</sup>	6.3360 x 10 <sup>4</sup>	5.280 x 10 <sup>3</sup>
1 mile = 1.760 x 10 <sup>3</sup> yards = 1.609 km = 1.60900 x 10 <sup>5</sup> cm				

### Area Conversions

	cm <sup>2</sup>	m <sup>2</sup>	in <sup>2</sup>	ft <sup>2</sup>
<b>1 Square Centimeter (cm<sup>2</sup>) =</b>	1	1 x 10 <sup>-4</sup>	0.155	1.08 x 10 <sup>-3</sup>
<b>1 Square Meter (m<sup>2</sup>) =</b>	10 x 10 <sup>3</sup>	1	1.550 x 10 <sup>3</sup>	10.76
<b>1 Square Inch (in<sup>2</sup>) =</b>	6.452	6.45 x 10 <sup>-4</sup>	1	6.94 x 10 <sup>-3</sup>
<b>1 Square Foot (ft<sup>2</sup>) =</b>	9.29 x 10 <sup>2</sup>	9.29 x 10 <sup>-2</sup>	1.44 x 10 <sup>2</sup>	1
1 Square Foot (ft <sup>2</sup> ) = 9.2903 x 10 <sup>-6</sup> hectare = 2.2957 x 10 <sup>-5</sup> acres = 9.29 x 10 <sup>-2</sup> m <sup>2</sup> = 9.29 x 10 <sup>-8</sup> km <sup>2</sup> = 3.587 x 10 <sup>-8</sup> = mile <sup>2</sup> = 929 cm <sup>2</sup>				

### Volume Conversions

	cm <sup>3</sup>	m <sup>3</sup>	L	ft <sup>3</sup>	U.S. Gal
<b>1 Cubic Centimeter (cm<sup>3</sup>) =</b>	1	1 x 10 <sup>-6</sup>	1 x 10 <sup>-3</sup>	3.53 x 10 <sup>-5</sup>	2.64 x 10 <sup>-4</sup>
<b>1 Cubic Meter (m<sup>3</sup>) =</b>	1 x 10 <sup>6</sup>	1	1 x 10 <sup>3</sup>	35.315	2.6417 x 10 <sup>2</sup>
<b>1 Liter (L) =</b>	1 x 10 <sup>3</sup>	1 x 10 <sup>-3</sup>	1	3.53 x 10 <sup>-2</sup>	2.642 x 10 <sup>3</sup>
<b>1 Cubic Foot (ft<sup>3</sup>) =</b>	2.8317 x 10 <sup>4</sup>	2.8317 x 10 <sup>-2</sup>	28.317	1	7.481
<b>1 U.S. Gallon (U.S. Gal) =</b>	3.7854 x 10 <sup>3</sup>	3.7854 x 10 <sup>-3</sup>	3.785	0.1337	1

1 U.S. Gal = 4 quarts = 8 pints = 16 cups = 256 tbsps (U.S. tablespoons) = 768 tsps (U.S. teaspoons)

= 128 fluid ounces = 3785.4 cm<sup>3</sup> or mL (milliliters)

### Weight Conversions & Water Density

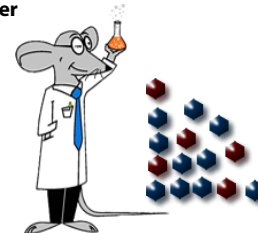
	g	Kg	oz	lb
<b>Gram (g) =</b>	1	1 x 10 <sup>-3</sup>	3.527 x 10 <sup>-2</sup>	2.205 x 10 <sup>-3</sup>
<b>Kilogram (Kg) =</b>	1 x 10 <sup>3</sup>	1	35.27	2.205
<b>Ounce (oz) =</b>	28.35	2.835 x 10 <sup>-2</sup>	1	6.25 x 10 <sup>-2</sup>
<b>Pound (lb) =</b>	4.536 x 10 <sup>2</sup>	0.4536	16	1
1 cm <sup>3</sup> H <sub>2</sub> O = 1 gram; 1 m <sup>3</sup> H <sub>2</sub> O = 2.2045 x 10 <sup>3</sup> lbs; 1 liter H <sub>2</sub> O = 1 Kg; 1 ft <sup>3</sup> H <sub>2</sub> O = 62.4 lbs;				
1 US gal = 3.7854 x 10 <sup>3</sup> g = 8.3 lbs = 133.5 oz = 3.78 Kg				

### Two - Dimensional Shapes

	Area	Perimeter/Circumference
<b>Rectangle</b>	A = l w	P = 2 (l + w)
<b>Square</b>	A = s <sup>2</sup>	P = 4 s
<b>Triangle</b>	A = ½ b h	P = a + b + c
<b>Trapezoid</b>	A = ½ h (b <sub>1</sub> + b <sub>2</sub> )	P = a + b <sub>1</sub> + c + b <sub>2</sub>
<b>Isosceles Trapezoid</b>	A = ½ h (b <sub>1</sub> + b <sub>2</sub> )	P = 2 w + b <sub>1</sub> + b <sub>2</sub>
<b>Circle</b>	A = π r <sup>2</sup>	C = π d = 2 π r

### Three - Dimensional Shapes

	Surface Area	Volume
<b>Box</b>	SA = 2 l w + 2 l h + 2 w h	V = l w h
<b>Sphere</b>	SA = 4 π r <sup>2</sup>	V = π r <sup>3</sup>
<b>Cylinder</b>	SA = 2 π r (r + h)	V = π r <sup>2</sup> h



**Nevada Analytical Services**

**Reno, NV**

**Phone: 775.284.3970 | Fax: 866.755.7619**

**[www.nevadaanalytical.com](http://www.nevadaanalytical.com)**